

## Ideal for Export Shipments

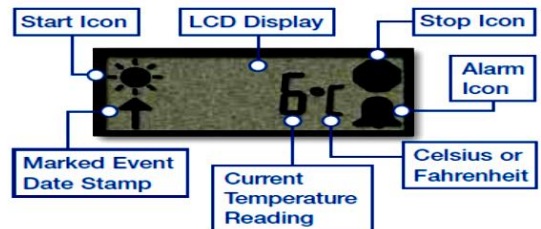
Exporters now have fast, simple, efficient and secure cold chain visibility without purchasing proprietary software and hardware

The demand for year-round fresh has created a global supply chain for today's food industry. Consumers no longer eat according to seasonality. This new global supply chain is considerably more complex—handoffs, time and distance are all major contributors adding costs, risks and creating an environment ripe for problems.

Monitoring the cold chain throughout these complex export supply chains should be the easy part. The TempTale<sup>®</sup>4 USB data logger combines Sensitech's industry-leading temperature monitoring technology with USB 2.0 PC communications and a powerful on-board microprocessor that enables access to recorded shipment information without a proprietary desktop software application or the purchase of hardware reader. So exporters can feel confident for two reasons: receivers now have access to time/temperature records for shipment disposition assistance; and, information can easily be shared—all that's needed is a local PC.

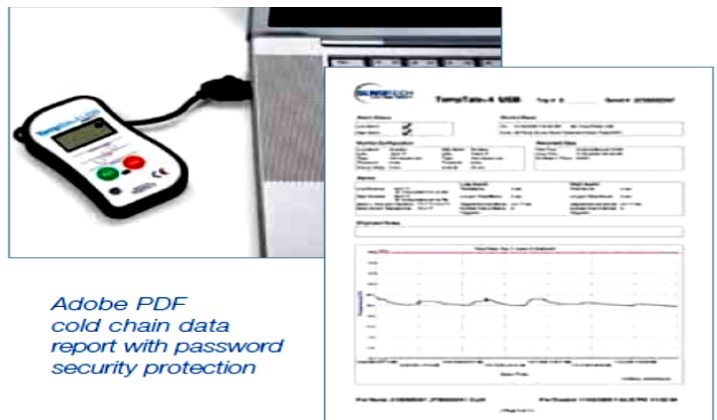
Plug the TempTale4 USB monitor into a PC's USB port and the monitor will automatically create a cold chain shipment information report in Adobe<sup>®</sup> PDF format. Viewable using any Adobe compatible reader program, which is free and widely available, the report provides a complete cold chain trip history, allowing for rapid on-site shipment dispositions. Through e-mail or other file sharing capability, every interested party can instantly and effortlessly review shipment information.

The TempTale4 USB also creates an encrypted data file (.ttx format) compatible with Sensitech's TempTale Manager Desktop<sup>™</sup> (TTMD) software and ColdStream<sup>™</sup>, Sensitech's Internet-accessible secure, hosted data repository. The .ttx format data file enables secure data transfer, aggregation, analysis and storage in support of 21 CFR Part 11 compliance and other rigorous quality assurance requirements.



### TempTale4 USB Specifications

<b>Monitor Recording Options</b>	Single use, internal sensor
<b>Temperature Measurement Range</b>	-22°F to 158°F (-30°C to 70°C)
<b>Temperature Accuracy Range</b>	±2°F from -22°F to 0°F (±1.1°C from -30°C to -18°C) ±1°F from 0°F to 122°F (±0.55°C from -18°C to 50°C) ±2°F from 122°F to 158°F (±1.1°C from 50°C to 70°C)
<b>Temperature Resolution</b>	0.1°F/C over full temperature measurement range
<b>Data Memory Type</b>	Non-volatile 16K EEPROM
<b>Data Storage Capacity</b>	16,000 data points (16K)
<b>Battery Life/Type</b>	1-year run life/3.0v lithium battery
<b>Data Sampling Interval</b>	Programmable from 10 seconds up to a maximum of 2 hours
<b>Water Resistant Housing</b>	NEMA 6 rating (electronic enclosure)
<b>Start-Up Delay</b>	Minimum – 0 seconds Maximum – 194 days
<b>LCD Programmable Options</b>	Display current temperature reading, display temp values in °F or °C, Enable flashing of start, stop and alarm icons
<b>Start Up Options</b>	Manual push button or automatic launch option
<b>Alarm Function</b>	Programmable high and low limits; alarm is triggered when temperature exceeds set limits
<b>Typical Dimensions</b>	3.95" L x 2.18" W x 0.82" H (10.0cm L x 5.5cm W x 2.1cm H)
<b>Weight</b>	2.5 ounces, 71 grams
<b>Quality Assurance Certifications</b>	CE Mark; Calibration Traceable to NIST; RoHS, WEEE
<b>Compatible Software</b>	In order of priority: - Adobe Reader - TempTale Manager Desktop - ColdStream Data Management
<b>Computer Interface</b>	USB 2.0, A-Type plug



Adobe PDF cold chain data report with password security protection

### Features and Benefits

- Easy-to-use "plug-n-play" operation
- No purchasing of proprietary software to be installed at shipment destination
- Integrated USB connector; no hardware or interface cable required
- Fully independent operation; no PC applications and no retained PC "footprint"
- Automatic generation of Adobe PDF cold chain data report allows prompt on-site decision making
- Automatic generation of encrypted data file enables simple retrieval and e-mail transfer of recorded data to the shipment originator; eliminates the return of the monitor to the originator for data download
- Data file compatibility with Sensitech's software tools permits comprehensive data analysis and record keeping
  - TempTale Manager Desktop – PC-based Windows<sup>®</sup> application for storing, displaying, analyzing, and printing recorded time-and-temperature data
  - ColdStream<sup>™</sup> Data Management – web-accessible data management software service for centralized storage and retrieval of cold chain logistics information

Operating the monitor outside of published specifications may affect the accuracy of the data and the standard operation of the monitor.